

## Intermittent Vertical Bagger with Various Retrofit Options

# SVI 2620/SVI 4020



**BOSCH**

Invented for life



### Benefits

- ▶ Entry level machine with easy upgrade capabilities
- ▶ Economic retrofit of corner seal and doy style unit
- ▶ Low machine height enables higher production speed and increases overall equipment effectiveness (OEE)

### Packaging Versatility

The SVI is capable of performing multiple standard bag styles, such as pillow bags, side gusseted bags and stand up block bottom bags as well as corner seal, doy style and zip applications.

### Application Versatility

The SVI is designed to package an unlimited variety of food and non-food products, such as powders, bakery and confectionery, tea, coffee as well as pet food and non-food products such as detergents.

### Film Material Versatility

The flexible machine offers heatsealing and polysealing options, with freely adjustable sealing temperatures according to product specification.

### Easy Integration

The modular machine design of the SVI with various up- and downstream interfaces allows for easy integration of: dosing devices (augers, weighers, cup fillers, liquid pumps), coffee valve applicators, gas flushing, printers, labelers as well as checkweighers. Existing intermittent machines such as the Bosch SVB range can be replaced at low costs, as components such as forming sets can be easily integrated in the new SVI machine.

### Machine Design

The low machine height facilitates a compact product stream, leading to higher speed and increased efficiency and ergonomics.

### Retrofits Made Easy

The SVI is a price competitive machine that can be easily upgraded according to customer needs and changing business conditions. A corner seal unit can be easily integrated, as the machine height does not need to be changed or adapted. This is a significant benefit particularly when already having a dosing platform in place. Furthermore the SVI offers an economic doy style retrofit, by easily turning the machine cross seal jaw housing to a 90 degrees position.

### Module++

As part of the Bosch Packaging Technology portfolio, the modular machine design of the SVI allows an easy integration with other packaging equipment such as Delta Robots or case packers for secondary packaging.

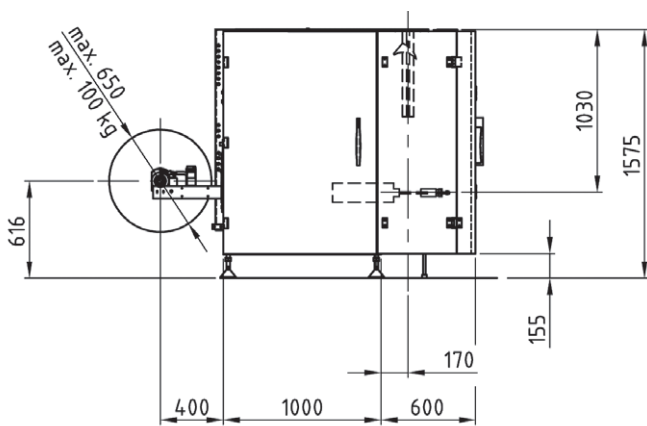
Left: Film transport upgradeable from friction to vacuum belts  
 Middle: User friendly HMI  
 Right: SVI forming set



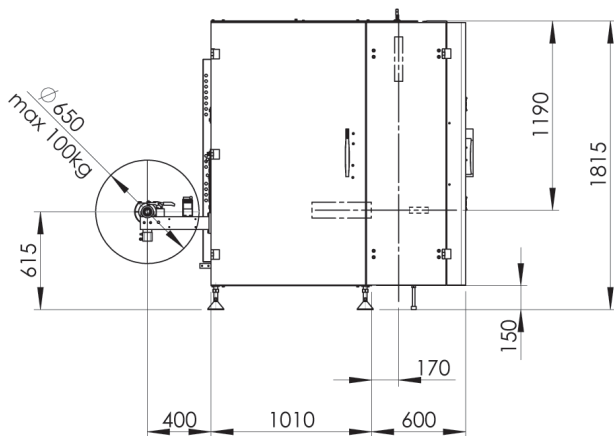
### Format Change Capabilities

- ▶ Film reel
- ▶ Forming set and usual tools for relevant bag styles
- ▶ Cross seal jaws
- ▶ Auger filler tube
- ▶ Transition funnel
- ▶ Heat seal to PHS sealing system
- ▶ Gas flushing tube
- ▶ Addition of corner sealing option or doy-style pack
- ▶ Integration of coffee valve applicator

### Machine Footprint SVI 2620 – Side View



### Machine Footprint SVI 4020 – Side View



### Technical Specifications

#### Mechanical output

SVI 2620:	10–120 bags/min
SVI 4020:	10–100 bags/min

#### Bag length

SVI 2620:	100–400 mm
SVI 4020:	100–500 mm

#### Bag width

SVI 2620:	60–260 mm
SVI 4020:	120–400 mm

#### Stand up bags

SVI 2620	
Width:	50–230 mm
Depth:	30–125 mm
Total width + depth:	80–260 mm
SVI 4020	
Width:	70–370 mm
Depth:	30–190 mm
Total width + depth:	100–400 mm

#### Connected electrical load

11 KVA, 230/400V, 50/60Hz, 3-phase + N

#### Compressed air requirement

0,5 l/cycle at minimum pressure of 5 bar

#### Machine weight

SVI 2620:	approx. 920 kg
SVI 4020:	approx. 1.250 kg

#### Machine dimensions

SVI 2620:	1.230 x 2.100 x 1.575 mm (W x D x H)
SVI 4020:	1.440 x 2.100 x 1.815 mm (W x D x H)

#### Surface coating

Metallic silver, smooth satin finish.

#### Packaging materials

Imprinted or non-imprinted off the reel packaging materials.

#### Core inner diameter

70–77 mm

#### Reel outer diameter

Max. 650 mm

#### Degree of protection

IP54

#### Equipment safety

The equipment meets European CE safety regulations.

– if applicable: local agent address –

Robert Bosch Packaging Technology B.V.  
 Industriekade 43  
 NL-6001 SE Weert  
 Telephone: +31 495 574 000  
 Telefax: +31 495 574 094  
 Email: sales.vffs@bosch.com  
 www.boschpackaging.com